

**Protists and Fungi** ▪ *Guided Reading and Study***Fungi**

*This section explains what fungi are, how they get food, and their role in the environment.*

**Use Target Reading Skills**

*Before you read, preview the red headings. In the graphic organizer below, ask a what or how question for each heading. As you read, write answers to your questions.*

**Fungi**

Question	Answer
What are fungi?	Fungi are . . .

**What Are Fungi?**

- Circle the letter before each sentence that is true about fungi.
  - All fungi are multicellular organisms.
  - Most fungi are eukaryotes.
  - Most fungi use spores to reproduce.
  - Most fungi are autotrophs.
- What are three examples of fungi?

---

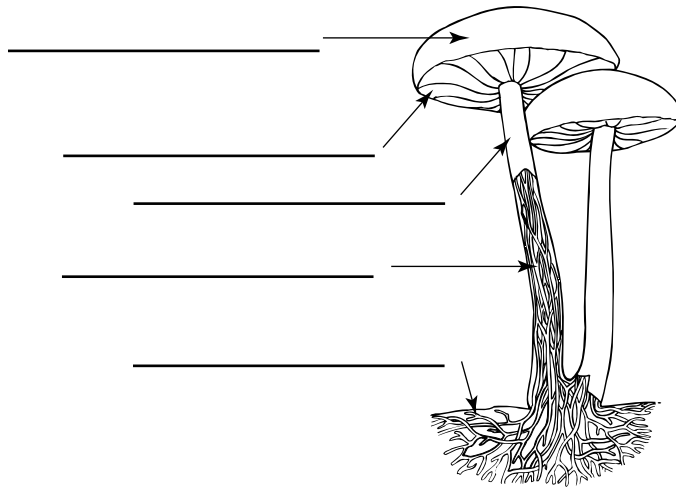
---

---

**Protists and Fungi** ▪ *Guided Reading and Study*

**Fungi** *(continued)*

3. The cells of fungi are arranged in branching, threadlike tubes called \_\_\_\_\_
4. Is the following sentence true or false? Fuzzy-looking molds that grow on food have hyphae that are packed tightly together. \_\_\_\_\_
5. Identify the structures of the mushroom shown here.



6. Describe the process by which a fungus feeds.

---

---

---

---

---

7. Is the following sentence true or false? Some fungi are parasites.

---

**Reproduction in Fungi**

8. Most fungi reproduce by making \_\_\_\_\_.
9. Yeast cells reproduce asexually in a process called \_\_\_\_\_.
10. Is the following sentence true or false? Fungi reproduce sexually when growing conditions become unfavorable. \_\_\_\_\_
11. What are the three major groups of fungi?
  - a. \_\_\_\_\_
  - b. \_\_\_\_\_
  - c. \_\_\_\_\_

**Protists and Fungi** ▪ *Guided Reading and Study*

**The Role of Fungi in Nature**

12. Fungi that are \_\_\_\_\_ break down the chemicals in dead organisms.
13. Is the following sentence true or false? Certain kinds of fungi cause diseases in plants and in humans. \_\_\_\_\_
14. Some molds produce \_\_\_\_\_, substances that kill bacteria.
15. How do some fungi help plants grow larger and healthier?
16. An organism that consists of a fungus and either algae or autotrophic bacteria that live together in a mutualistic relationship is a(n) \_\_\_\_\_. The fungus provides the algae or autotrophic bacteria with \_\_\_\_\_. The algae or autotrophic bacteria provide the fungus with \_\_\_\_\_.